

## Making *Audit* simple



Capture the Audit information you need, in an easy to use and intuitive software product.

Incorporating international best practice, Pro Audit Advisor makes it easier to conduct an audit, and faster to generate, report and graphically present audit results. Pro Audit Advisor enables you to:

- Spend more time auditing and less time recording
- Manage audit findings and recommendations within a single database
- Audit using a risk based approach
- Design an audit report with bite, then use it as a template for future reporting
- Provide better feedback to your audit customers, with improved report turn-around and flexible graphing

- Analyse and understand audit results with powerful sort and filter functions

Used by internal auditors across the globe, Pro Audit Advisor is the ultimate electronic workpaper tool - you can even create business unit self-assessments using Methodware's unique Word and HTML form reports, and integrated e-mail capabilities.

### The Ultimate Electronic Workpaper Tool

Pro Audit Advisor supports electronic workpapers allowing for a paperless audit process. Linked to controls, workpapers can be raised by the auditor to document the results of tests performed and if required, recommended actions. comments can be recorded.

Key characteristics such as follow up dates are entered to facilitate the management of key findings/issues and management .

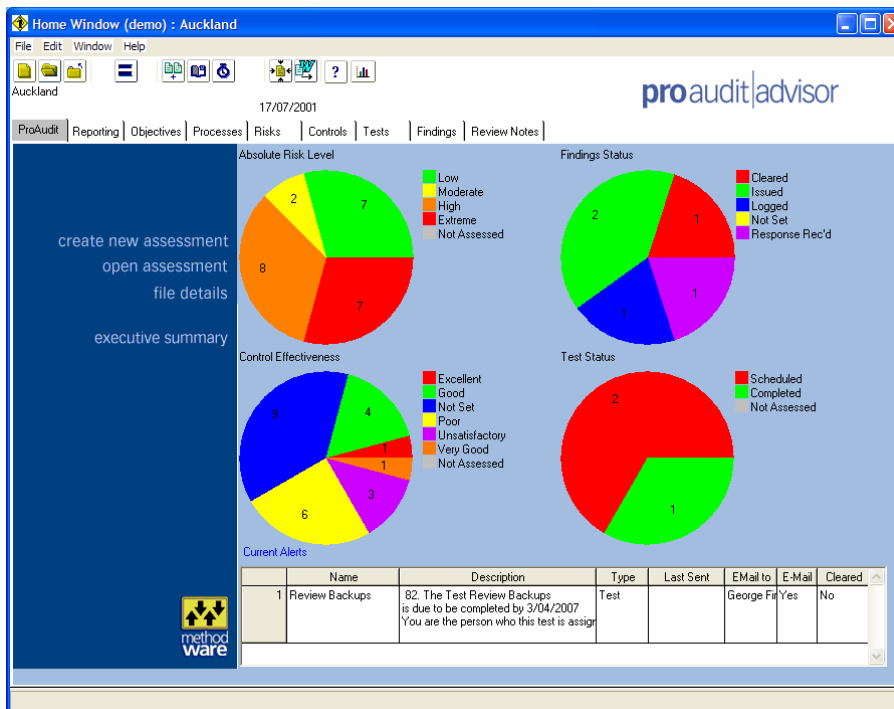
With full interface to Microsoft® Word and Excel for reporting and analysis, and attachment functionality through to audit tools such as ACL, Pro Audit Advisor provides better and faster reports for business units, and allows easy review and analysis once the audit is complete.

### Data Dictionary

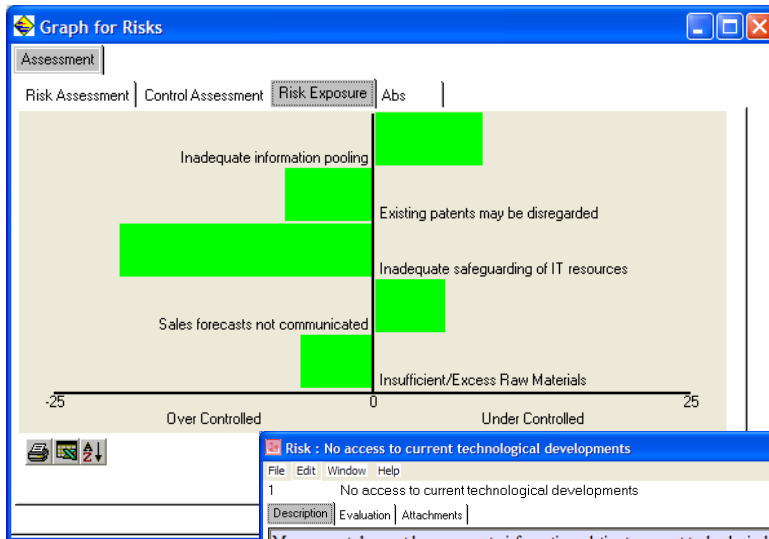
Pro Audit Advisor contains a Data Dictionary that gives users the ability to alter the terminology, tool tips and security levels in the software to suit their own unique requirements.

### COSO

The generic COSO Internal Control Integrated Framework business model is supplied with Pro Audit Advisor. Comprising 10 mega-process areas and a database of pre-defined risks and controls, these process models can be imported into Pro Audit Advisor as a starting point and customised to reflect your operating environment.



Clear graphs, sophisticated filtering functionality and a comprehensive suite of reports enable users to quickly and clearly focus on any particular area of concern.



Pro Audit Advisor supports a graphical portrayal of the audit through bar and matrix/heat graphs. This Bar Graph illustrates the Risk Exposure for this audit, clearly showing areas of under and over control.

An overall controlled risk score is given for each risk using the Control Slider. Users make an overall judgment of the level of control based on the individual control assessments for each control.

## Solutions

Methodware has the software solutions to fit your organisation's unique needs. Whether you are an audit department with a small team of auditors, or a large multi-national organisation with international teams of auditors, we have the solution that is right for you.

## About Methodware

Methodware Ltd has been developing and distributing risk management and risk management and internal audit software solutions internationally since 1993. Methodware has offices in Australasia,

Europe and North America. Methodware also has a network of partners selling and supporting its products in over 80 countries worldwide.

Methodware's adaptable, powerful and user-friendly software solutions make assessment simple for organisations of all sizes and types, from small companies with a single risk manager, to large multi-national organisations with a group risk management function and international teams of auditors.

The list of over 1600 clients using Methodware's software encompasses the public sector, financial services, engineering and manufacturing, retail and telecommunications.

*Pro Audit Advisor is produced by Methodware Ltd  
© 1997 - 2007  
All rights reserved*

Download a free demonstration of

**pro audit|advisor**

Go to  
[www.methodware.com](http://www.methodware.com)